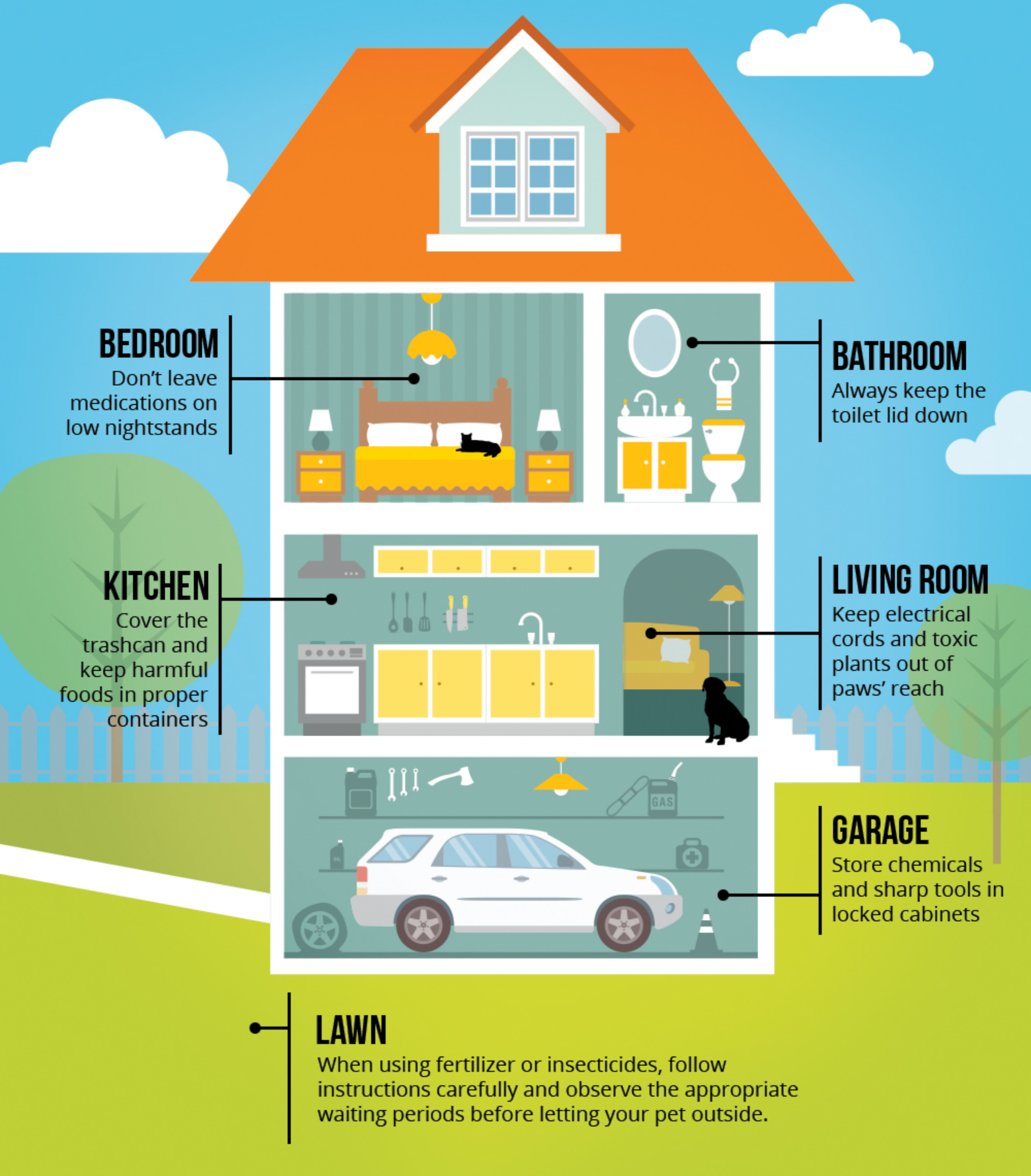


PET-PROOF YOUR HOME

Is your furry friend safe at home? Here's a room-by-room guide to make sure.



BEDROOM

Don't leave medications on low nightstands

BATHROOM

Always keep the toilet lid down

KITCHEN

Cover the trashcan and keep harmful foods in proper containers

LIVING ROOM

Keep electrical cords and toxic plants out of paws' reach

GARAGE

Store chemicals and sharp tools in locked cabinets

LAWN

When using fertilizer or insecticides, follow instructions carefully and observe the appropriate waiting periods before letting your pet outside.

For more information:



IMCpetinsurance.com

ASPCA® PET HEALTH INSURANCE